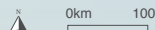


National Park Authorities are uniquely placed to continue supporting sustainable economic growth in National Parks. Maintaining thriving living landscapes, where natural assets are conserved and enhanced while people, businesses and communities prosper, now and in the future.

With sufficient core funding and the support of partners, National Park Authorities will be able to continue to help National Park economies to grow in a sustainable way and contribute to national prosperity and wellbeing.



Contains Ordnance Survey data © Crown copyright and database rights 2017
National Park boundaries © Natural England Scottish Govt and Natural Resources Wales 2017



National Parks England,
CAN Mezzanine, 7-14 Great Dover Street,
London SE1 4YR Tel: 020 3096 7979

www.nationalparksengland.org.uk
@NatParksEngland



National Parks England is a not for profit company limited by guarantee, number 6521048, registered in England.

National Parks, National Assets



England's National Parks are environmental and cultural assets playing a valuable role in local and national economies.

England's 10 National Parks are special places. Covering 9.7% of England by area, they are our finest landscapes, with iconic archaeological and historical sites and valuable wildlife habitats. They are visited by millions of people every year and are home to strong communities who care passionately for these beautiful areas.

Economic activity in National Parks is underpinned by the high quality environment. Key activities such as farming help maintain and enhance the special qualities of National Parks.

National Park Authorities work closely with communities, businesses and others helping them add value and grow, supporting skills development, investing in infrastructure, and attracting visitors while maintaining a high quality landscape and environment.

Between 2012-16 the number of businesses in National Parks grew by more than 10% and over 21,000 jobs were created. The turnover of businesses in National Parks in 2016 was £13bn – making a significant contribution to local and national economies.

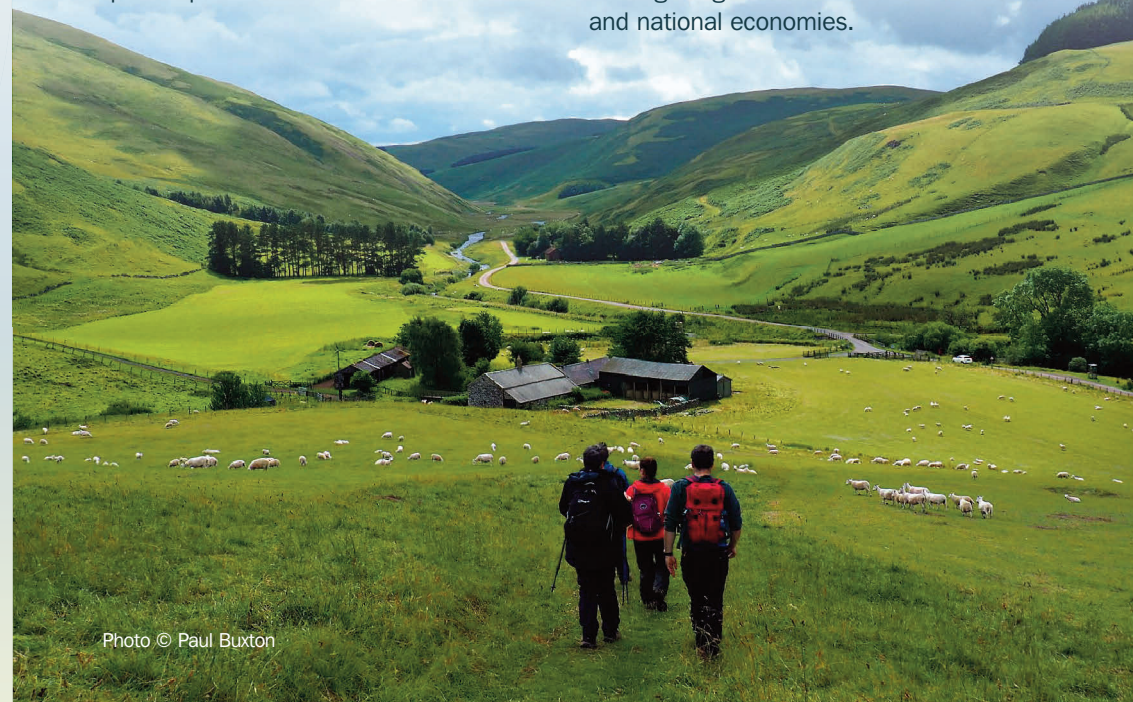


Photo © Paul Buxton

National Parks, National Assets

16,000

people in National Parks have a primary occupation in agriculture

1/3

of the Public Forest Estate is in National Parks

There are **94m** visitors

to National Parks and surrounding areas each year, spending more than **£5bn** and supporting **75,000** jobs (full time equivalent)

In 2016 National Park Authorities provided

nearly **100,000**

outdoor education experiences for children and young people



More than **1/5** of Scheduled Monuments in England are in National Parks

In 2016 **>£13billion**

of turnover was generated by businesses in National Parks, and employed

140,000 people

OVER **24%**

of land in the National Parks is designated as Sites of Special Scientific Interest (SSSIs)

OVER **330,000**

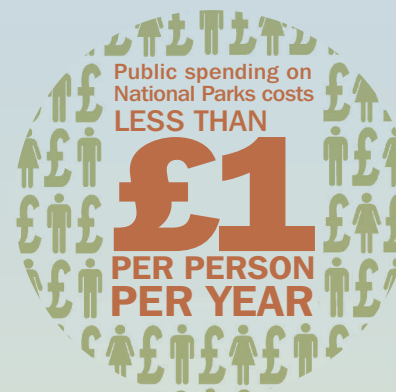
hectares is recognised and protected as being of international conservation importance

90%

of people say National Parks are important to them

96%

say they want every child to experience a National Park first hand



National Park volunteers put in over **45,000** work days per year, valued at **£3.4m**